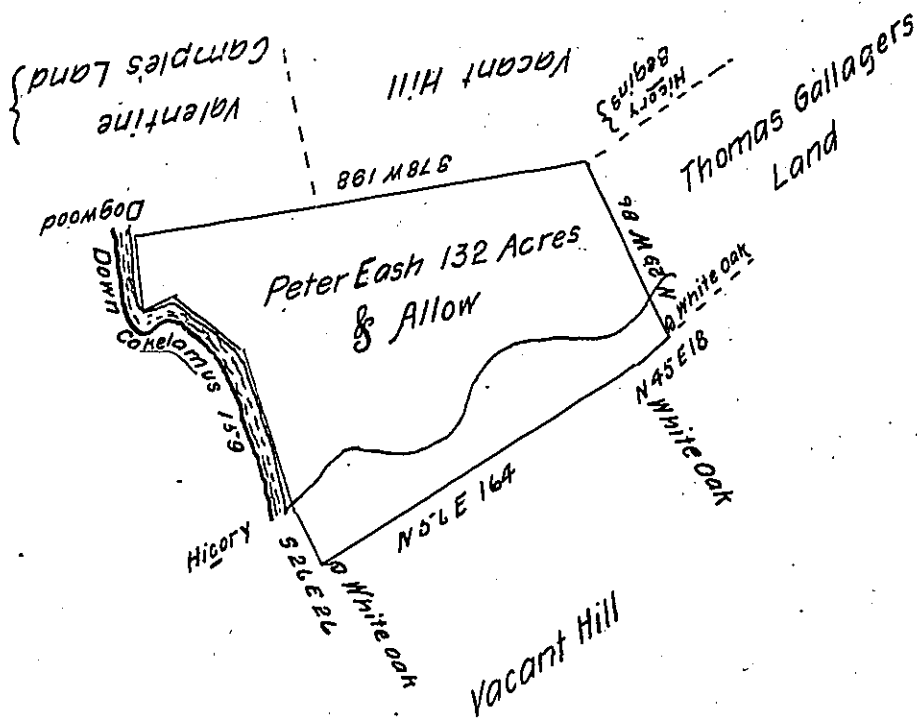


Courses and Distances
down Cokelamus

S 9 E 33
N 60 E 14
S 58 E 39
S 20 E 73
159



The Draught of a Tract of Land Called _____ Situate on Cokelamus Creek
in the County of Cumberland containing One Hundred and thirty two acres with
the usual allowance of six acres P. Cent for Roads. Survey'd the 15th day of April
Anno Dom: 1767. In pursuance of a Warrant From the Hon^{ble} Proprietaries to
Peter Eash Bearing date at Philad^a the 3^d day of February Anno Dom: 1765.

P _____ W^m Maclay D. S.

To John Lukens Esq^r S. G.
of Pennsylvania

IN TESTIMONY that the above is a copy of the original remaining on file in
the Department of Internal Affairs of Pennsylvania, made
conformably to an Act of Assembly approved the 16th day of
February, 1833, I have hereunto set my Hand and caused
the Seal of said Department to be affixed at Harrisburg,
this nineteenth day of August 1904.

George R. Brown
Secretary of Internal Affairs.